

# Configuring and managing User Profile Synchronization

IT114

**Spencer Harbar**

Enterprise Architect

harbar.net

# About Spencer



► [www.harbar.net](http://www.harbar.net) | [spence@harbar.net](mailto:spence@harbar.net) | @harbars

- General SharePoint Dogsbody
- Microsoft Certified Master | SharePoint 2007
- Microsoft Certified Master | SharePoint Instructor & Author
- Most Valuable Professional | SharePoint Server
- SharePoint Patterns & Practices Advisory Board Member
- 16 years in Enterprise IT
- ISPA Vice President
- Enterprise Architect working with Microsoft's largest customers deploying SharePoint Server.
- Works with SharePoint Product Group on 2010 Readiness
- Author for MSDN & TechNet

# Agenda

- ▶ Problem Space
- ▶ “Metaverse”
- ▶ Evolution of Microsoft Identity Management
- ▶ Configuring User Profile Sync

# PROBLEM SPACE

# User Attributes

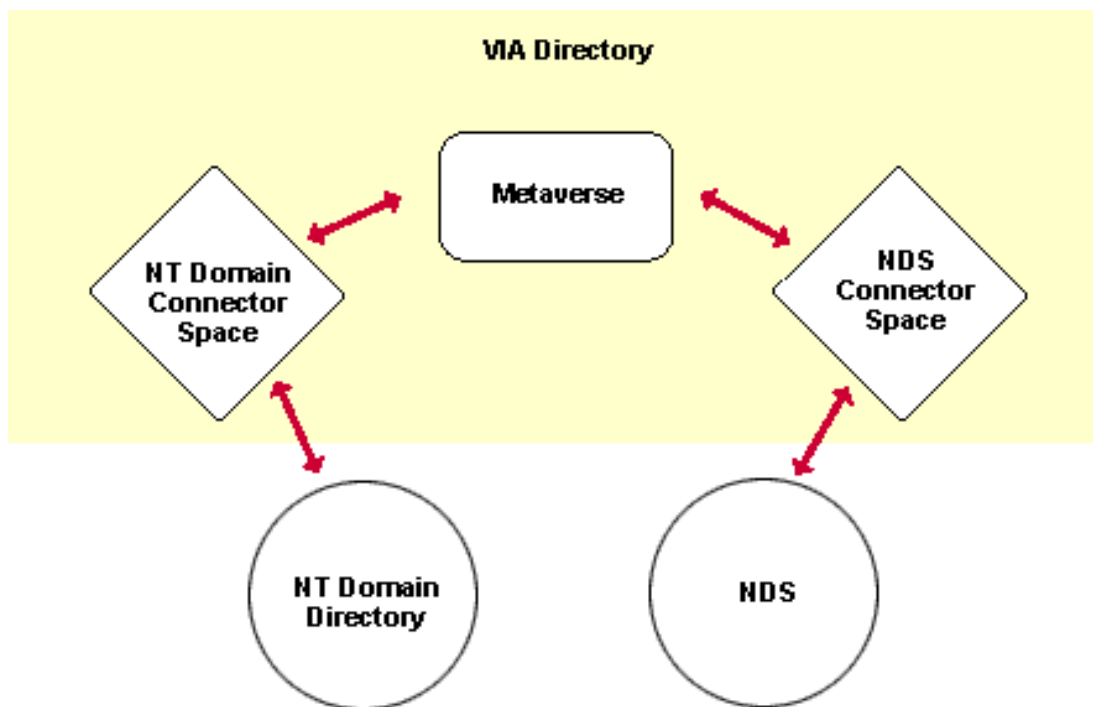
- ▶ Are stored all over the place!
  - Active Directory
  - HR System
  - LOB System
  - Legacy Web apps
  - Even (shudder!) Novell
  - And of course, SharePoint User Profiles

# Key request

- ▶ "Write Back"
- ▶ Change AD attributes based on changes to User Profile Properties

# “Metaverse”

- ▶ A really good Sci-Fi book 😊
  - Snow Crash
- ▶ Metadirectory



▶ Microsoft

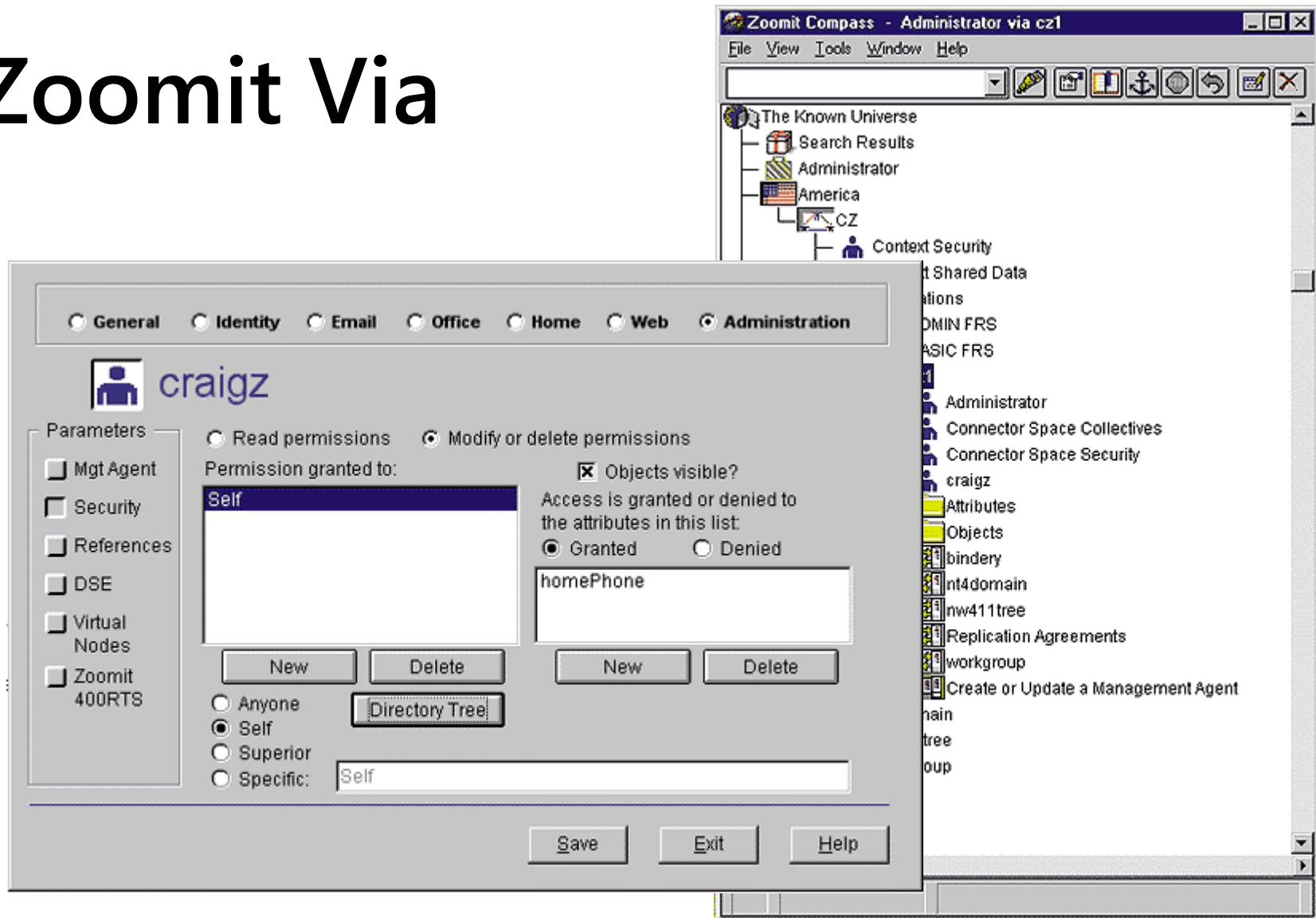
# **IDENTITY MANAGEMENT EVOLUTION**



# Microsoft Identity Management

- ▶ Zoomit Via
- ▶ Microsoft Metadirectory Services (MMS)
- ▶ Identity Integration Server (MIIS)
- ▶ Identity Lifecycle Manager (ILM)
- ▶ Forefront Identity Manager (FIM)

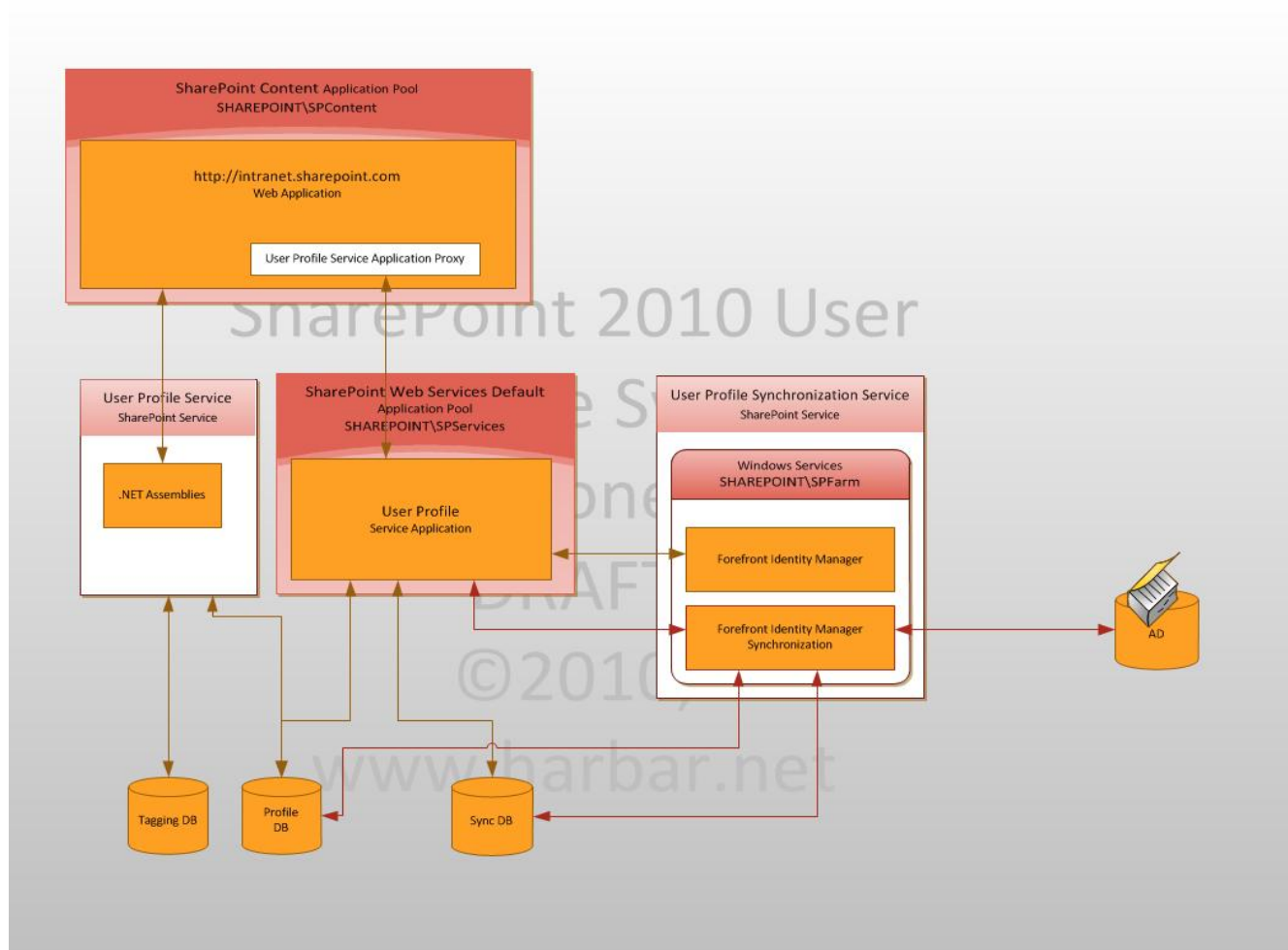
# Zoomit Via



▶ SharePoint Server 2010

# **USER PROFILE SYNC**

# User Profile Subsystem



# Demo

That's enough chat

## **CONFIGURING USER PROFILE SYNC**

# Recommendations

- ▶ Don't try and workaroud the Farm Account Issue
- ▶ Don't use the same account to run the service and perform the sync
- ▶ Validate Active Directory Permissions before you start
- ▶ Patience, Patience, Patience!

**Thank you for attending!**





**Patrick, we miss you**